

# CLESTRA

## PRESS RELEASE

December 7<sup>th</sup>, 2021



*Vincent Paul-Petit, CEO  
Clestra group*

In a fast-growing market of the pharmaceutical, biotechnology and micro-electronics sectors, Clestra Cleanroom will offer its customers more complete solutions, either as turnkey solutions or by supplying and installing products for larger projects.



*Miroslav Tonovski, CEO  
PPG Cleanroom*

Together with Clestra Cleanroom we will continue to set high standards in order to achieve and provide the best results for our customers.

### **CLESTRA CLEANROOM and PPG Cleanroom join forces to deliver a brighter future**

After 15 years of sustainable cooperation, Clestra Cleanroom and PPG Cleanroom have gone a step further joining forces to create a leading European company in the cleanroom area. To be able to provide a fast and quality response to the needs of a fast-growing international market is the reason behind this decision and our principal goal.

As a global player in the design and construction of turnkey cleanrooms, Clestra considers this merger an opportunity not only to diversify its offer and strengthen its geographical presence in Western and Central Europe, and the Middle East, but to also increase penetration in the global marketplace, with the support of its North American and Asian network.

The merger foresees that Clestra group shall gradually acquire control over PPG Cleanroom, thus creating synergies with its Clestra Cleanroom division.

On its end, PPG Cleanroom (formerly POLI PANEL GROUP Co) is a specialist in cleanrooms design, construction, building and validation. It has over 35 years of expertise in designing and executing contamination-controlled environments.

Its latest innovation, NAYA<sup>®</sup>, an autonomous, modular, and convertible cleanroom unit, is entirely in line with Clestra group's strategy of building ready-to-use modules for facilities as a way to minimize and overcome site constraints.

**[WWW.CLESTRA.COM](http://WWW.CLESTRA.COM)**



**Yucel Kaner, COO**  
**PPG Cleanroom**

Joining a larger and very complementary group, our aim is to continuously bring fresh new ideas and solutions to the cleanroom industry.



**Michel Hertzog, Executive Director - Clestra Cleanroom**

PPG Cleanroom is a long-standing partner with whom we have already carried out many projects. This merger is therefore very natural and will enable us to better meet the expectations of this perpetual moving industrial market.

The complementarities and synergies between our two companies in terms of activities, products, expertise, and know-how will only enable us to make a better market offer, by:

- Having a strong engineering team for the design of cleanrooms, based on EU GMP/FDA requirements and consultancy;
- Providing a guarantee for the quality and successful completion of projects through a unique industrial capacity;
- Building an efficient fitting structure;
- Offering customers high-performance and competitive products as well as «turnkey» solutions;
- Responding to large-scale markets throughout the world.

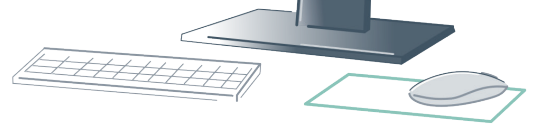
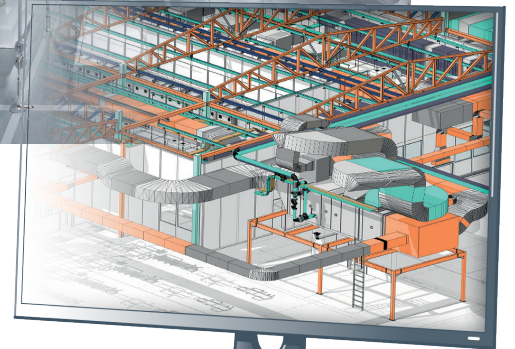
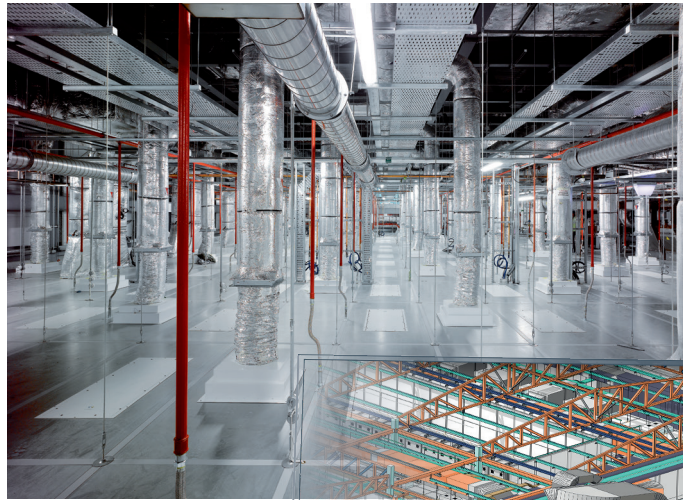
As partners we both share the same ambitions for growth and value creation.

We have been the first choice for biotechnology of many global pharma industries, semi-conductor and food-industries all over the world, and we have recently participated in comprehensive projects like the Biogen Project in Switzerland, Teva in Germany, UCB in Belgium, or Nanoform in Finland, for a total of over 1000 projects performed so far.

Both companies will keep their current management structure continuing thus to serve their customers in an autonomous manner.

## **Clestra and PPG Cleanroom TOGETHER will compile:**

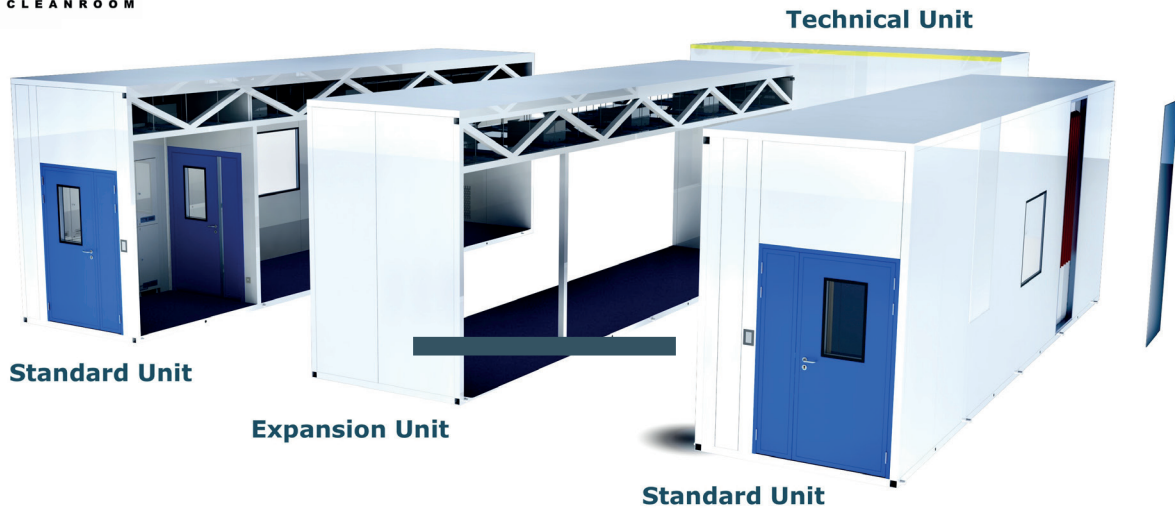
- 900+ employees,
- presence in European countries, Middle East, Africa, Asia and USA,
- unique industrial capacity for production a full range of cleanroom equipment with several dedicated production capacities in Europe and Asia.



Digital integration, prefabrication, modularity, and safe on-site execution ensure the quality of Clestra cleanrooms.



CONVERTIBLE  
CLEANROOM



Standard Unit

Expansion Unit

Standard Unit

Technical Unit



NAYA, a modular, prefabricated, and multipurpose cleanroom solution.

## About the Clestra group

As a global construction partner, Clestra delivers highly-performant, future-proof spaces for its clients around the world.

We leverage our expertise in offsite manufacturing and modular construction to build spaces ranging from office workspaces to cleanrooms for the pharmaceutical and biotech industries. For organizations willing to expand sustainably, Clestra is committed to shape their futures through industrial construction and continuous servicing.

More information: [www.clestra.com](http://www.clestra.com)

Follow us on [LinkedIn](#) and [Facebook](#).

## Press contact:

Raymonde Eberlé / [r.eberle@clestra.com](mailto:r.eberle@clestra.com) / +33 6 62 90 41 31.