

SUSTAINABLE DEVELOPMENT CHARTER

SEPTEMBER 2022

CLESTRA

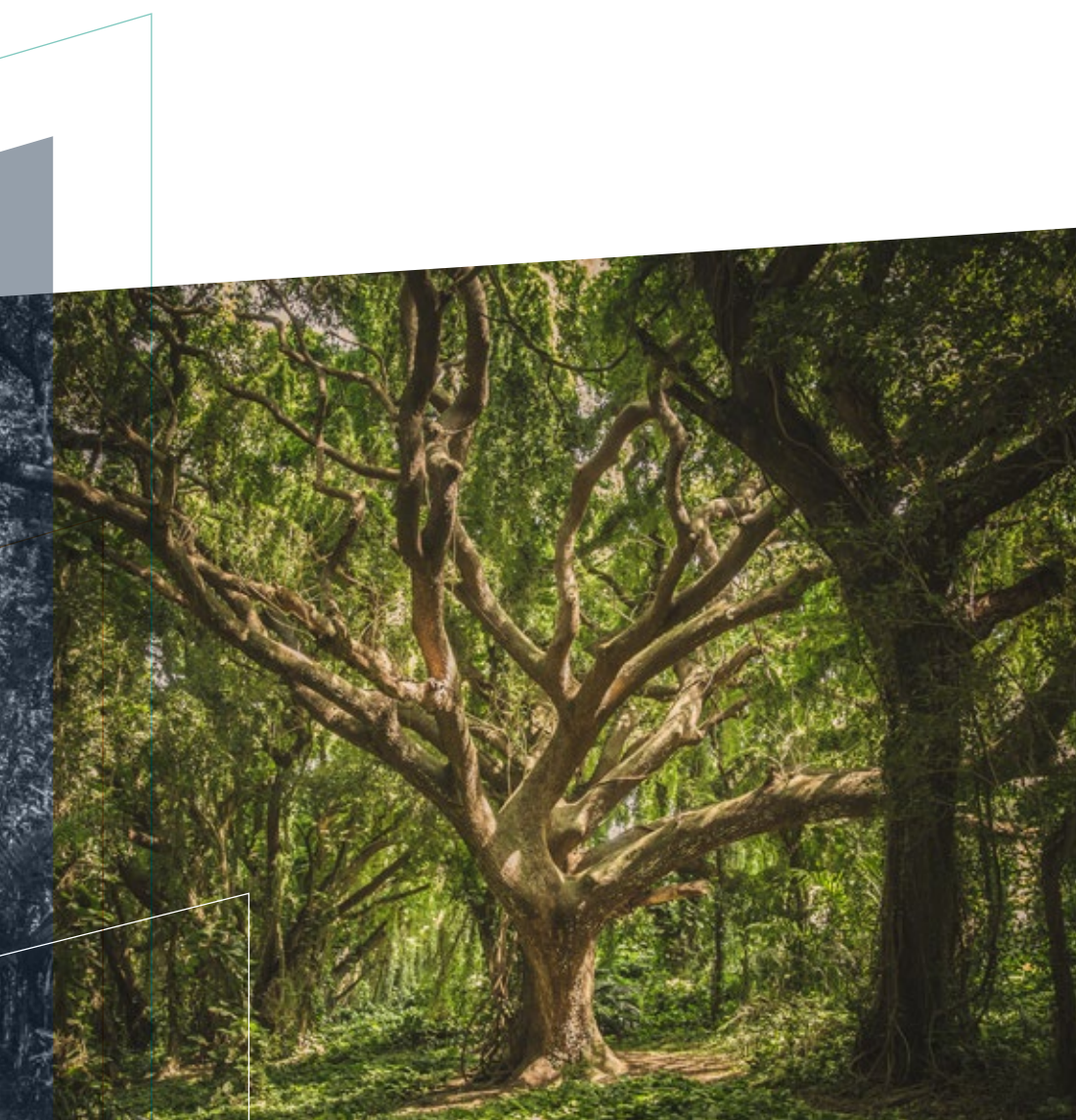
WWW.CLESTRA.COM

INDEX

CSR POLICY	4
LEED®	10
BREEAM®	18
HEQ®	26
CLESTRA CERTIFICATIONS	37
. EUROPEAN TECHNICAL ASSESSMENT	38
. QSE CERTIFICATION	39
. ISO 9001	40
. ISO 14001	42
. ISO 45001	44
. KOSHA 18001	45
. CRADLE TO CRADLE®	46
. ENVIRONMENTAL PRODUCT DECLARATION	49
. VOLATILE ORGANIC COMPOUNDS EMISSIONS	54

CSR POLICY

CLESTRA SOCIAL RESPONSIBILITY



Fully aware of the impact of its activities on society and the environment, the Clestra company has committed to a CSR approach for many years. This approach is based on four main principles:



RESPONSIBLE GOVERNANCE



ENVIRONMENTAL COMMITMENTS



SOCIAL RESPONSIBILITIES



ECO-DESIGN & CIRCULAR ECONOMY



RESPONSIBLE GOVERNANCE

TRANSPARENCY AND ETHICS

- . A CSR approach supported by all management and employees.
- . A business ethics charter whose purpose is to combat corruption.
- . A supplier relationship charter that takes into account all economic and environmental issues.
- . A social charter whose purpose is to make the interests and practices of Clestra operational in terms of responsibility towards its employees.
- . The Clestra factories are ISO 9001 – ISO 14001 and ISO 45001 certified.

ENVIRONMENTAL COMMITMENTS

RESPONSIBLE PROCUREMENT

- . An operational purchasing strategy aimed at minimising its impact on natural resources, framed by a charter shared with its suppliers.
- . Our suppliers are ISO 14001 or equivalent-system qualified.
- . 100% of our wood, carton and paper comes from sustainable sources (PEFC / FSC certification).

CONTROL OF ITS ENERGY CONSUMPTION ACCOMPANIED BY ACTIONS AIMED AT REDUCING IT

- . Replacement of energy intensive equipment.
- . Heat recovery.
- . Use of LED bulbs with presence detector.

MONTHLY CONSUMPTION MONITORING

- . Of materials.
- . Of energies.
- . Of water.

REDUCTION IN GHG EMISSIONS

- . Optimisation of transport, along with the development of reusable rather than recyclable packaging.
- . Low-carbon energy use.
- . Promotion of electric or hybrid modes of transport (electrically-assisted bicycles and vehicle fleet renewal).

WATER CONTROL

- . Recycling of water used in manufacturing processes, elimination of external discharges, closed-loop operation.

WASTE REDUCTION

- . 94% of waste is treated in recycling or reuse facilities.
- . The processing of « hazardous » waste is provided by specific facilities.
- . Implementation of selective sorting instructions both in our factories and in our offices (DIB, DIS, Aluminium, Glass, Steel, etc.).
- . Reduction of paper consumption by opting for digital solutions.
- . Work gloves are washed and reused.



SOCIAL RESPONSIBILITIES

OCCUPATIONAL HEALTH AND SAFETY

- . Continuous training is conducted through Prevention and Safety Meetings with employees throughout the year.
- . A Single Professional Risk Assessment Document is constantly updated to serve as a common thread for preventive actions.
- . A Health and Safety Commission meets regularly to establish the areas of prevention.
- . An ISO 45001-certified occupational health and safety management system is in place.

PROMOTION OF GENDER EQUALITY

- . At Clestra, we have made respect for gender equality a priority. Each employee is considered for their skills as well as their work. Today, Clestra has many women in key positions in the company. Our group is committed to continuing this dynamic in the years to come.

PROMOTION OF DIVERSITY

- . Recruitment of numerous apprentices in France through national mobilisation **#1jeune1solution**.
- . Multiple job creation around new activities and new projects.
- . Accessibility of positions in all of the group's organizations through internal recruitment.
- . Promotion and respect for multicultural diversity in the teams.

TRAINING

- . Support for employees throughout their careers at Clestra to maintain and develop their skills.
- . Support for employees in their individual projects.
- . Guarantee employability.



ECO-DESIGN & CIRCULAR ECONOMY

REUSABLE PRODUCTS

- . Product removability allows their reuse as organisations evolve.

WASTE REDUCTION

- . Prefabrication design reduces waste production from the first stage of manufacture to the installation of our solutions.

LOW-EMISSION RECYCLED MATERIALS

- . Our products are designed with recycled materials with low VOC emissions.

INDOOR AIR QUALITY

- . Indoor air quality is guaranteed by the A+ certification our solutions enjoy.

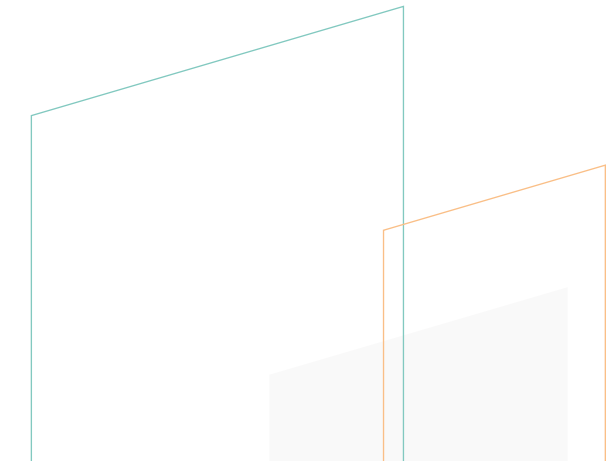
END OF LIFE

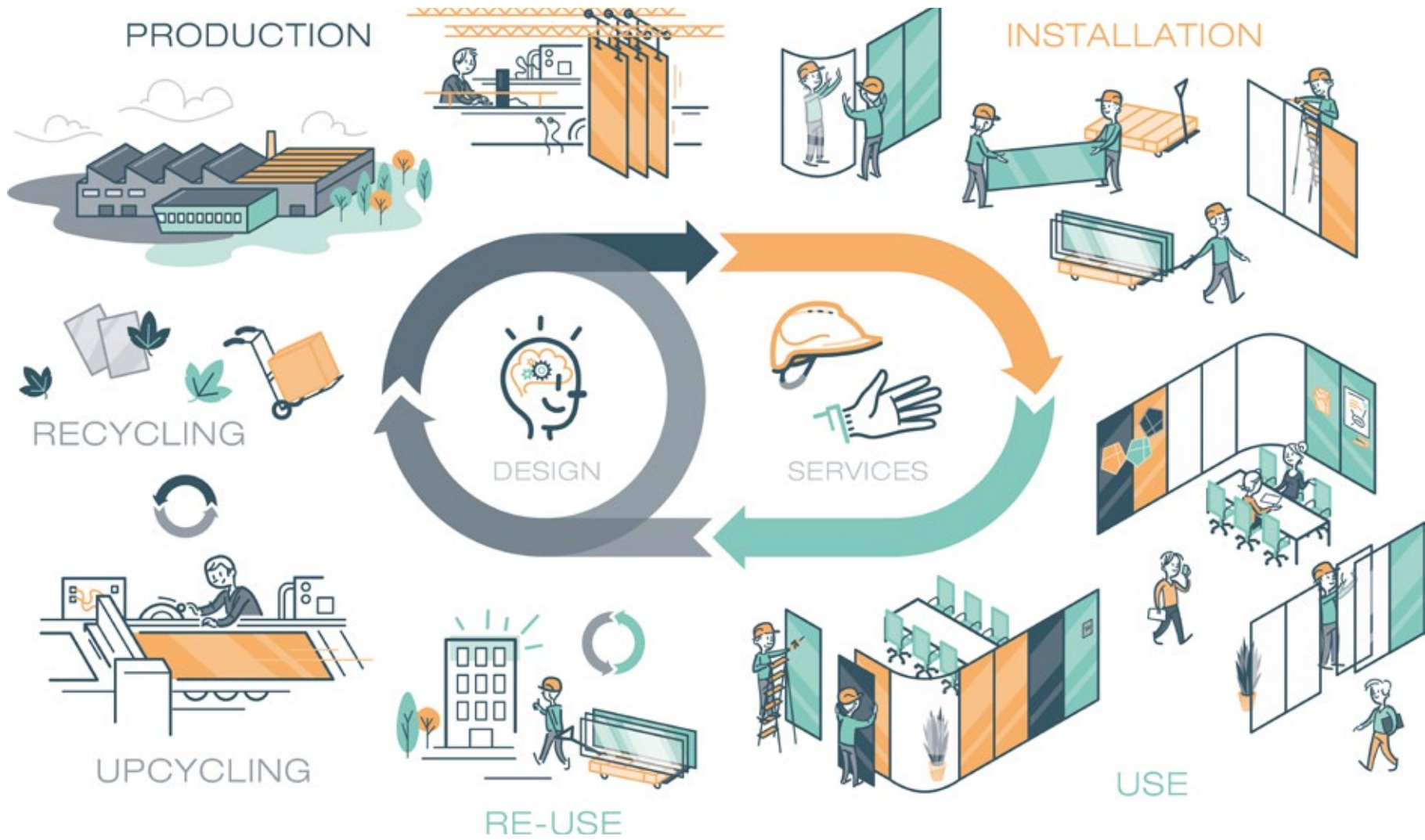
- . Rapid on-site dismantling of workspaces.
- . Products are designed to be transformed and reused at new sites.

EASE OF MATERIAL RECYCLING

- . Our products are mostly recyclable and their easy disassembly facilitates material processing operations.

**The circular economy,
one of the foundations
of Clestra's ecosystem.**





LEED®

LEADERSHIP IN ENERGY AND ENVIRONMENTAL DESIGN

CLESTRA

LEED®

LEADERSHIP IN ENERGY AND ENVIRONMENTAL DESIGN



The LEED Green Building Rating System helps professionals to improve the quality of their buildings and their impact on the environment. This program not only has a positive impact on public health and the environment, but also reduces the overhead costs to keep the building running throughout its life, potentially improves the productivity of its occupants, and contributes to the creation of a sustainable society.

LEED supplies market-oriented voluntary rating systems based on accepted green building practices and energy saving principles. It seeks to strike a balance between established practices and new concepts.

Currently the standard « LEED version 4.1: Building design and construction (LEED v.4.1 BD + C) » is in version 4.1 dated 25 July 2019.

If we take this version into account, Clestra solutions have a direct favourable impact on the following twelve chapters:

		Available points	Clestra contribution
IPc1	Integrative process	1	1
SSp1	Construction activity pollution prevention	Required	Achieved
MRc1	Building life cycle impact reduction	2 - 6	3
MRc2	Building disclosure and optimization: environmental product declarations	1 - 2	2
MRc3	Building disclosure and optimization: sourcing of raw materials	1 - 2	2
MRc4	Building disclosure and optimization: material ingredients	1 - 2	2
MRc5	Construction and demolition waste management	1 - 2	2
EQc2	Low emitting materials	1 - 3	3
EQc3	Construction indoor air quality management plan	1	1
EQc8	Quality views	1 - 2	1
EQc9	Acoustic performances	1 - 2	2
IPc2	Innovation	1 - 5	2
Total		28	21

IPc1

INTEGRATIVE PROCESS

» CLESTRA'S CONTRIBUTION TO THIS TARGET

The partitions allow high level of adaptability to any spaces, having outstanding acoustic properties, it is possible to optimise the space allotment per person or per working area.

SSp1

CONSTRUCTION ACTIVITY POLLUTION PREVENTION

» CLESTRA'S CONTRIBUTION TO THIS TARGET

Partitions are produced and packed at the production site and need only assembling on site. It significantly reduces construction operations, thus keeping emissions and environmental impacts low during installation stage.

MRc1

BUILDING LIFE CYCLE IMPACT REDUCTION

» CLESTRA'S CONTRIBUTION TO THIS TARGET

Clestra have performed a life cycle assessment for the products in the form of EPD. The parameters estimated and available include the following categories:

- . Global warming potential (greenhouse gases),
- . Depletion of the stratospheric ozone layer,
- . Acidification of land and water sources,
- . Eutrophication,
- . Formation of tropospheric ozone,
- . Depletion of nonrenewable energy resources.

MRc2

BUILDING PRODUCT DISCLOSURE AND OPTIMIZATION: ENVIRONMENTAL PRODUCT DECLARATIONS

» CLESTRA'S CONTRIBUTION TO THIS TARGET

Environmental Product Declarations (EPDs) are available for every Clestra product range. These EPDs were performed according to ISO 14025 and EN 15804 and verified by the third party. These declarations and the attestation certificates are publically available.

MRc3

BUILDING PRODUCT DISCLOSURE AND OPTIMIZATION: SOURCING OF RAW MATERIALS

» CLESTRA'S CONTRIBUTION TO THIS TARGET

Clestra has implemented and has certified:

- . The environmental management system in accordance with ISO 14001,
- . The quality management system in accordance with ISO 9001,
- . The security management system in accordance with ISO 45001.

Our products have obtained European Technical Approval (ETA).

Timber panels used for wood parts are labelled FSC/PEFC which certifies the principles of sustainable forest management.

In addition our partitions will add credits thanks to the recycled content: based on the rigorous product study the average level of product recycled content is about 45%.

MRc4

BUILDING PRODUCT DISCLOSURE AND OPTIMIZATION: MATERIAL INGREDIENTS

» CLESTRA'S CONTRIBUTION TO THIS TARGET

Having performed the content inventory of the materials Clestra states in the form of the REACH self-declaration that the products used are compliant with Regulation No. 76-769 of 27 July 1976 relative to the restrictions on the marketing and use of certain dangerous substances and preparations.

In addition, asbestos-containing materials and other harmful materials in general are not used in the partition production.

MRc5

CONSTRUCTION AND DEMOLITION WASTE MANAGEMENT

» CLESTRA'S CONTRIBUTION TO THIS TARGET

Easy installation, with each component, whether a solid, glazed or door, arriving on site factory-finished. All elements are pre-manufactured, the onsite work consists merely of the wedge key assembly of the panels. So there is no waste, no painting, no plaster and no mess.

Installation times are particularly short, thanks to the monoblock panel system. Onsite work time is thus shortened leading to a significant reduction of the environmental impact.

Therefore the wastes generated on site represents solely the wood packaging, that is 100% recyclable and its volume is negligible. Managing this type of waste is easy and can be adapted to the project-specific site procedures or, if these procedures are not available, we can take care of its handling.

EQc2

LOW EMITTING MATERIALS

EQc3

CONSTRUCTION INDOOR AIR QUALITY MANGEMENT PLAN

» CLESTRA'S CONTRIBUTION TO THIS TARGET

Partitions are entirely produced and packed in the production site and need only assembling on site. It significantly reduces construction operations, thus keeping emissions and environmental impacts low during installation stage.

For example, the rock wool between the panels is closed within the monoblock structure and have no emissions during the construction phase and afterwards, during operations or maintenance. It should be also noted that the partitions are painted in our plant. So that there is no need to glue a finishing vinyl on and, consequently, there is no emissions on site.

The Clestra epoxy polyester mix lacquers applied in the plant are based on inert organic pigments. It prevents emissions of VOC or any other type of air pollution on-site.

Manufactured partitions comply with the VOC emission class A+. ISO16000 and CDPH Standard Method test results used for this assessment are available for perusal. No fuel or solvents on site are required for assembling.

EQc8

QUALITY VIEWS

» CLESTRA'S CONTRIBUTION TO THIS TARGET

One of the major advantages of our product development is the research and design of glazed components to offer occupants more natural light and maintain the views intended by the building's architecture - with an aesthetic and functionality which meet the requirements of the office user.

EQc9 ACOUSTIC PERFORMANCES

» CLESTRA'S CONTRIBUTION TO THIS TARGET

All Clestra products are tested in an official laboratory. They meet the strictest acoustic requirements. Our company provides an acoustic engineering Trial Consultancy service to customers who wish to install the most suitable products for their desired interior design.

Clestra partitions have high level of composite sound transmission class rating and noise isolation class that will allow to attain the substantial contribution to this credit assessment.

IPc2 INNOVATION

» CLESTRA'S CONTRIBUTION TO THIS TARGET

Our wall systems are designed for flexibility and ease of adaptation and changes of building interior. High-quality materials used for production ensure our products will sustain the test of time and could be used all along the building's life-cycle.

Clestra contributes to achieving exemplary performance in the following credits:

- . Low-emitting materials,
- . Acoustic performances.

BREEAM®

BUILDING RESEARCH ESTABLISHMENT ENVIRONMENTAL ASSESSMENT METHOD

CLESTRA

BREEAM®

BUILDING RESEARCH ESTABLISHMENT ENVIRONMENTAL ASSESSMENT METHOD



BREEAM certification standard is the most widely used across the world. Each building type has its own scheme. (BREEAM Courts, Ecohomes, Healthcare, Education, Offices, Prisons...).

BREEAM is an easy to use certification system which permits to know a building environmental performance.

This certification system helps professional to improve their environmental impact. A BREEAM certification is a proof of their implication in a sustainable environmental approach.

This approach also enhances the productivity, comfort and wellbeing of building occupants.

CERTIFICATIONS PROCESS:

BREEAM certification is separated in different chapters to cover the whole process of a building environmental evaluation. Each of them allows points, called credits, measuring the building contribution in its life cycle.

Please find below the ten existing chapters:

- . Management,
- . Health and Wellbeing,
- . Energy,
- . Transport,
- . Water,
- . Materials,
- . Waste,
- . Land use and Ecology,
- . Pollution,
- . Innovation.

The result is classified in a certification level scale as follow:

Pass	★	≥ 30%
Good	★★	≥ 45%
Very Good	★★★	≥ 55%
Excellent	★★★★	≥ 70%
Outstanding	★★★★★	≥ 85%

If we take into account the « BREEAM International New Construction 2016 » standard that exists in version 2.0 dated July 2017 and applicable to new international construction, Clestra solutions have a direct favourable impact on the following ten criteria:



		Available credits	Clestra contribution	Score in %
Hea 01	Visual comfort	6	6	
Hea 02	Indoor air quality	5	5	
Hea 03	Safe containment in laboratories	2	2	
Hea 05	Acoustic performance	4	4	
Sub-total		17	17	13,87%
Mat 01	Life cycle impacts	6	6	
Mat 03	Responsible sourcing of construction products	4	4	
Mat 06	Material efficiency	1	1	
Sub-total		11	11	13,00%
Wst 01	Construction waste management	3	3	
Wst 06	Functionnal adaptability	1	1	
Sub-total		11	11	6,00%
Inn 01	Innovation	10	4	
Sub-total		10	4	4,00%
Total in %				36,87%

Clestra products may contribute **up to 37% of the final rating** to obtain the certification.

Hea 01

VISUAL COMFORT

» CLESTRA'S CONTRIBUTION TO THIS EVALUATION CRITERION

One of the major advantages of our product development is the research and design of glazed components to offer occupants more natural light and maintain the views intended by the building's architecture - with an aesthetic and functionality which meet the requirements of the office user.

Hea 02

INDOOR AIR QUALITY

» CLESTRA'S CONTRIBUTION TO THIS EVALUATION CRITERION

Partitions are produced and packed at the production site and need only assembling on site. It significantly reduces construction operations, thus keeping emissions and environmental impacts low during installation stage.

For example, the rock wool between the panels is closed within the monoblock structure and have no emissions during the construction phase and afterwards, during operations or maintenance. It should be also noted that the partitions are painted in our plant. So that there is no need to glue a finishing vinyl on and, consequently, there is no emissions on site.

The Clestra epoxy polyester mix lacquers applied in the plant are based on inert organic pigments. It allows to avoid the VOCs and any other emissions onsite.

Timber panels used for wood parts are labelled PEFC which certifies the principles of sustainable forest management. These panels meet the standard E1 that includes the monitoring of the urea formalin and formaldehyde treatment.

Manufactured partitions comply with the VOC emission class A+. ISO16000 and CDPH Standard Method test results used for this assessment are available for perusal. No fuel or solvents on site are required for assembling.

Hea 03

SAFE CONTAINMENT IN LABORATORIES

» CLESTRA'S CONTRIBUTION TO THIS EVALUATION CRITERION

Clestra proposes special solutions of cleanrooms for the pharmaceutical industry, laboratories, micro-mechanics, biotechnology, cosmetics, high-tech, healthcare and any other classified spaces for the industry in general.

We offer coherent, reliable and efficient solutions by providing the ability to integrate set of valves, control boxes, or other types of equipment into the panels

Our solutions guarantee containment and classification levels meeting the highest international standards in the sector, such as European cGMP and American FDA standards.

In the research and development laboratories, analysis laboratories our facilities protect the people, the environment and products from contamination by micro-organisms and particles.

Specialising in designing, building and validation of cleanrooms, our cleanroom division of Clestra develops and realizes turn-key solutions. These are designed using our modular partition and ceiling systems, which can also include the air treatment system, the flooring, electrical work, qualification and maintenance.

Hea 05

ACOUSTIC PERFORMANCES

» CLESTRA'S CONTRIBUTION TO THIS EVALUATION CRITERION

All Clestra products are tested in an official laboratory and they meet the most highest acoustic requirements. Our company provides an acoustic engineering Trial Consultancy service to customers who wish to install the most suitable products for their desired interior design.

Clestra partitions have high level of composite sound transmission class rating and noise isolation class that will allow to attain the substantial contribution to this credit assessment.

Mat 01

LIFE CYCLE IMPACTS

» CLESTRA'S CONTRIBUTION TO THIS EVALUATION CRITERION

Environmental Product Declarations (EPDs) are available for every Clestra product range. These EPDs were assessed according to ISO 14025 and EN 15804 and verified by the third party. These declarations and the attestation certificates are publically available.

Mat 03

RESPONSIBLE SOURCING OF CONSTRUCTION PRODUCTS

» CLESTRA'S CONTRIBUTION TO THIS EVALUATION CRITERION

Clestra has implemented and has certified:

- . The environmental management system in accordance with ISO 14001,
- . The quality management system in accordance with ISO 9001,
- . The security management system in accordance with ISO 45001.

Our products have obtained European Technical Approval (ETA).

Timber panels used for wood parts are labelled FSC/PEFC which certifies the principles of sustainable forest management.

Mat 06

MATERIAL EFFICIENCY

» CLESTRA'S CONTRIBUTION TO THIS EVALUATION CRITERION

Clestra partitions are designed to be very flexible. Should partitions be moved, everything can be recovered causing no waste generation. Waste management needs only to be discussed at the product's end of life.

Clestra products have a life cycle well in excess of 50 years and a proven and demonstrated life cycle of more than 50 years (there are existing buildings with the company's original products dated 1960).

This durability reduces the waste generation significantly.

At its end of life, the partition is easily recycled as it contains only separate, recyclable components, namely steel, aluminium and rock wool.

Our products are easy to disassemble and remove during maintenance.

Wst 01

CONSTRUCTION WASTE MANAGEMENT

» CLESTRA'S CONTRIBUTION TO THIS EVALUATION CRITERION

Easy installation, with each component, whether a solid, glazed or door, arriving on site « factory-finished ». All elements are pre-manufactured, the onsite work consists merely of the wedge key assembly of the panels. So there is no waste, no painting, no plaster and no mess.

Installation times are particularly short, thanks to the monoblock panel system. Onsite work time is thus shortened leading to a significant reduction of the environmental impact.

Therefore the wastes generated on site represents solely the wood packaging, that is 100% recyclable and its volume is negligible. Managing this type of waste is easy and can be adapted to the project-specific site procedures or, if these procedures are not available, we can take care of its handling.

Wst 06

FUNCTIONAL ADAPTABILITY

» CLESTRA'S CONTRIBUTION TO THIS EVALUATION CRITERION

Our partitions are developed to be very flexible having high level of adaptability.

It is possible to optimise the space allotment per person or per working area according to the changing needs of the occupants of the building.

In addition the products are easy to disassemble and remove during maintenance.

Inn 01

INNOVATION

» CLESTRA'S CONTRIBUTION TO THIS EVALUATION CRITERION

Clestra products have high potential to do a substantial input to achieving the exemplary level of performance in the following issues:

- . Hea 02: Indoor air quality,
- . Mat 01: Environmental impacts from construction products - Building life cycle assessment (LCA),
- . Mat 03: Responsible sourcing of construction materials,
- . Wst 01: Construction waste management.



HEQ[®]

HIGH ENVIRONMENTAL QUALITY

CLESTRA

HEQ®

HIGH ENVIRONMENTAL QUALITY



High Environmental Quality or HEQ is a concept originally initiated by the HEQ Association, recognised for its public utility.

Applied to buildings, it is now available as an NF certified quality label, a voluntary quality mark, owned by AFNOR, the French Standardisation Association. Its operation has been awarded AFNOR Certification.

Currently the standard « HEQ Sustainable Building, Office and Hotel sectors » is in version 3.0 dated January 2019. In this version, there are four commitments including twelve objectives:

- 1. Responsible management**
- 2. Quality of life**
- 3. Respect of the environment**
- 4. Economic performance**

Clestra solutions have a direct positive impact on the following eight objectives:

1. RESPONSIBLE MANAGEMENT

10. Organisation adapted to the objectives of quality, performance and dialogue
11. Steering for a controlled project
12. Evaluation as guarantee of continuous improvement

2. QUALITY OF LIFE

1. Safer and healthier places to live
2. Pleasant, practical and comfortable living spaces

3. RESPECT OF THE ENVIRONMENT

4. Reasonable use of energy and natural resources
5. Pollution control and the fight against climate change

4. ECONOMIC PERFORMANCE

7. Charge and cost optimization

1. RESPONSIBLE MANAGEMENT

10. ORGANISATION ADAPTED TO THE OBJECTIVES OF QUALITY, PERFORMANCE AND DIALOGUE

» CLESTRA'S CONTRIBUTION TO THIS TARGET

Clestra's Responsible Management System (RMS) includes ISO 9001, ISO 14001 and ISO 45001. The Strasbourg factory has obtained this certification by a third party.

Term referred to by the applicant:

M1 to M5

11. STEERING FOR CONTROLLED PROJECT

» CLESTRA'S CONTRIBUTION TO THIS TARGET

Clestra demountable or removable partition modules are tailor-made according to the design of a building, allowing complete modularity, all partitions being interchangeable, depending on the installation's changing requirements. All this causes no destruction, no mess, allowing users to continue their activity if necessary. During transformation works, the materials are 100% recoverable.

Panels and doors are developed to allow to be moved without cutting or the need for new material: no waste and no production of spare parts.

Easy installation, with each component, whether a solid, glazed or door, arriving on site « factory finished ». The elements are pre-manufactured and are not built on site, the work consists merely of the wedge key assembly of the panels. So there is no waste, no painting, no plaster and no mess generated on site.



1. RESPONSIBLE MANAGEMENT

The installation time is particularly short, thanks to the monoblock panel system. This allows to reduce the duration of the construction work on site and, as a consequence, to mitigate the environmental impact.

Waste generated on site is minor being almost solely due to packaging (wood) that, by its nature, is recyclable. So that the waste management is easy and can be adapted to the project-specific site procedures or, if there are no such procedures, we will take care of its handling.

Term referred to by the applicant:

M1 to M5

12.

EVALUATION AS A GUARANTEE OF CONTINUOUS IMPROVEMENT

» CLESTRA'S CONTRIBUTION TO THIS TARGET

The performance evaluation of the operation regarding to the objectives and the continuous improvement are part of the management system according to ISO 9001, ISO 14001 and ISO 45001.

One of the major advantages of our product development is the research and design of components to offer an aesthetic and functionality that meet the requirements of the office user intended by the building's architecture.

Term referred to by the applicant:

M1 to M5

2. QUALITY OF LIFE

1. SAFER AND HEALTHIER PLACES TO LIVE

1.1 Indoor air quality

» CLESTRA'S CONTRIBUTION TO THIS TARGET

Most Clestra products are entirely factory assembled. This monoblock construction guarantees the containment of the rock wool within the panels. Therefore there could be no fibre emissions either during the construction phase or during the operation of the building or even when the partitions are moved.

The partitions are pre-painted in the factory. There is no need to glue on a finishing vinyl on site. And therefore, there cannot be the emissions on site.

For wood finishes, the timber panels are labelled FSC/PEFC which certifies the principles of sustainable forest management. These panels meet the standard E1 which includes the monitoring of the urea formalin and formaldehyde use.

According to the emission tests performed and the recommendation based on the French regulations dated 23 March 2011 (decree DEVL1101903D) and 19 April 2011 (decree DEVL1104875A) the surface

emissions of the partitions are of the label class A+ in relation to the concentration of TVOC, including formaldehyde and benzene.

Term referred to by the applicant:

Level E to A

2. PLEASANT, PRACTICAL AND COMFORTABLE LIVING SPACES

2.1 Accessibility

» CLESTRA'S CONTRIBUTION TO THIS TARGET

Partitions allow good contrasts between wall elements, doors and handles. Door action is easy thanks to the quality of joints and locks. At the same time the risk of shocks is minimized taking into account the follow-up of assembly on site. The size of the solid panels makes them easy to install. The fixing system, integrated in the panel, makes any joint covering superfluous.



2. QUALITY OF LIFE

All panels (solid, glazed, door) are interchangeable and retain excellent technical characteristics, including stability, reaction to fire and acoustics.

Term referred to by the applicant:

Level E to A

2.2 Adaptability

» CLESTRA'S CONTRIBUTION TO THIS TARGET

The monoblock panel is a removable element. It makes it easy to rearrange the space as services evolve while reducing the time of operations. Reusing panels also reduces operating costs and environmental impact.

In addition, the products have obtained the European Technical Approval (ETA).

Term referred to by the applicant:

Level E to A

2. QUALITY OF LIFE

2.4 Acoustic comfort

» CLESTRA'S CONTRIBUTION TO THIS TARGET

All Clestra products are tested in an official laboratory. They meet the strictest acoustic requirements. Clestra offers a « Tests and Expertise » service in acoustic engineering to customers who wish to install the products best tailored to the desired interior design.

Term referred to by the applicant:

Level E to A

2.5 Visual comfort

» CLESTRA'S CONTRIBUTION TO THIS TARGET

One of the major advantages of our product development is the research and design of glazed components to offer occupants more natural light and maintain the views intended by the building's architecture - with an aesthetic and functionality which meet the requirements of the office user.

Clestra's glazed partitions can offer up to over 96% transparent surface area. Their use increases the areas exposed to natural light.

Term referred to by the applicant:

Level E to A

3. RESPECT OF THE ENVIRONMENT

4. REASONABLE USE OF ENERGY AND NATURAL RESOURCES

4.1 Energy

4.2 Energy consumption related to the operational phase of the building

» CLESTRA'S CONTRIBUTION TO THIS TARGET

The durability and reusability of our partitions: substantial resources and energy savings. Reduced disruption and discomfort when changing partition layouts.

Clestra has developed the environmental product declarations (EPD) that contain the calculation of the forecast primary energy consumption and can be used to identify the HEQ classification.

Term referred to by the applicant:

Level E to A

5. POLLUTION CONTROL AND THE FIGHT AGAINST CLIMATE CHANGE

5.1 Waste

5.1.3 Construction waste

» CLESTRA'S CONTRIBUTION TO THIS TARGET

Simplicity of implementation, each element arrives on site « factory finished » whether solid, glazed or door. Nothing is built on site, the intervention on site is limited to the wedge key assembly of the panels. Therefore there is no waste, no paint, no plaster and no mess.

Construction wastes generated on site are consequently minor and are almost solely limited to the packaging (wood) that is, by nature, totally recyclable. So, the treatment of this waste is simple and can be adapted according to the procedures set up specifically for a construction site, or, if there are no procedures, can be treated by ourselves.

»»

3. RESPECT OF THE ENVIRONMENT

Clestra partitions are designed to be very flexible. If partitions are moved, everything can be recovered, generating no waste. Waste management needs only to be discussed at the product's end of life.

At the end of its life, the partition is easily recycled because there are only two recyclable components dissociated: steel and rock wool.

Dismantling and product disposal is easy. This has already been done for many years.

Term referred to by the applicant:

Level E to A

5.2 Climate change

5.2.1 CO2 emissions related to energy consumption during the operational phase of the building

» CLESTRA'S CONTRIBUTION TO THIS TARGET

The partition is removable. While implementing a new reconfiguration of the partitioning plan, almost 100% of the components are reused. Therefore the life cycle of the construction is extended by up to several decades.

This saves natural resources, reduces CO2 emissions and waste, and reduces the environmental impact in general.

Term referred to by the applicant:

Level E to A

5.3 Life cycle environmental impacts

5.3.1 Life cycle energy and environmental indicators

» CLESTRA'S CONTRIBUTION TO THIS TARGET

The energy and environmental indicators over the life cycle of the partitions are estimated by means of the environmental product declarations (EPD) that are available via the INIES database or on request.

These results can be used to identify the HEQ classification.

Term referred to by the applicant:

**Level Carbon 1, Carbon 2,
Energy 1 to 4**

4. ECONOMIC PERFORMANCE

7. CHARGE AND COST OPTIMIZATION

» CLESTRA'S CONTRIBUTION TO THIS TARGET

The maintenance needs of our partitions are nearly zero. An annual monitoring procedure is proposed in order to check the good performance of the installation over time, and if necessary to carry out repairs whatever the origin (for instance, some deterioration can be caused by mistreatment).

The maintenance or servicing procedures do not require the use of aggressive products. Soapy water is sufficient for cleaning.

Clestra products have a life cycle well in excess of 50 years and a proven and demonstrated life cycle of more than 50 years (there are existing buildings with the company's original products dated 1960). This durability reduces the waste generation significantly.

Term referred to by the applicant:

Level E to A



CLESTRA CERTIFICATIONS

CERTIFICATIONS AND OFFICIAL TEST REPORTS

CLESTRA

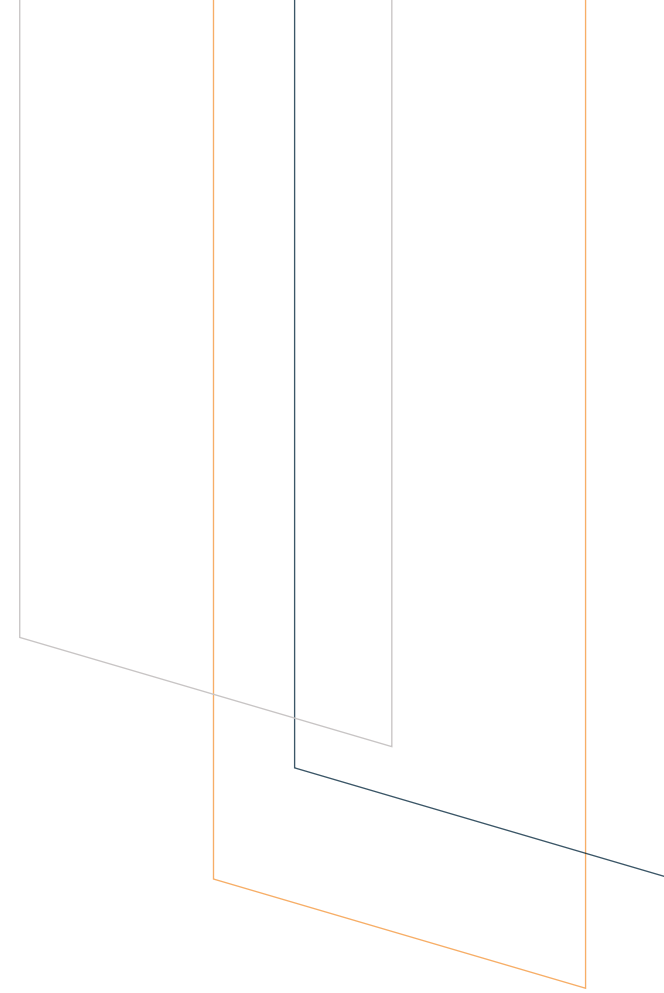
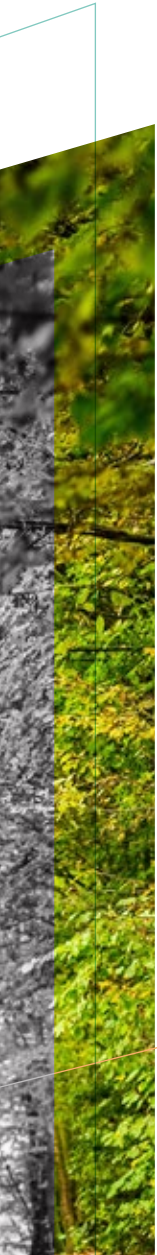
ETA

EUROPEAN TECHNICAL ASSESSMENT

The ETA forms a single, complete definition of the performances required of an internal non-load bearing partition.

Technical performances will henceforth be expressed in specifications as defined by ETA. This reference will be created progressively, as the European classification standards come into force.

Clestra has obtained ETA certification for most of its products or is in the process of obtaining certification.



QSE CERTIFICATION

QUALITY, SAFETY AND ENVIRONMENT

Clestra just obtained the combined certification ISO 9001, ISO 14001 and ISO 45001 for its factory and offices in Strasbourg.

CERTIFICAT
N° CSM/CLE009-004

CERTIFICATION INTERNATIONAL
SOCOTEC

certifie que le système de management de l'organisme :

CLESTRA HAUSERMAN
1 Route du Dr Albert Schweitzer 67400 IL_KIRCH GRAFENSTADEN

a été évalué et jugé conforme aux exigences de la norme :

ISO 9001 : 2015 - ISO 14001 : 2015
***ISO 45001 : 2018**

pour les activités suivantes :

CONCEPTION ET FABRICATION DE CLOISON ET PLAFONDS AMOVIBLES A DESTINATION DES SECTEURS TERTIAIRES ET INDUSTRIELS.
Design and manufacturing of relocatable partitions and ceilings for interior fitout of commercial and industrial buildings.
Konzeption und herstellung von versetzbaren trennwänden und decken für die einrichtung von dienstleistungs und industriegebäuden.

Dévoilé le : **24/04/2020**
Valable jusqu'au : **22/03/2023** (Sous réserve du maintien de la conformité du système de management de l'organisme)
*Référentiel non couvert par l'accréditation : ISO 45001 : 2018

Guillaume REY Directeur Opérationnel

cofrac ACCREDITATION N°4-0549
PORTÉE CERTIFICATION DISPONIBLE SUR WWW.COFRAC.FR

SOCOTEC Certification France
Tours Pacific, 13 cours Valmy - 92800 PUTEAUX
www.socotec-certification-international.fr

CSM_FORM_015 - V7.0 CGI-21122017-FR-FR

ISO 9001

QUALITY MANAGEMENT SYSTEM

Clestra is ISO 9001 certified for its Taicang factory in China.



ISO 9001

QUALITY MANAGEMENT SYSTEM

Clestra is ISO 9001 certified for its Gumi factory in South Korea.



ISO 14001

ENVIRONMENTAL MANAGEMENT SYSTEM

Clestra is ISO 14001 certified for its Taicang factory in China.



ISO 14001

ENVIRONMENTAL MANAGEMENT SYSTEM

Clestra is ISO 14001 certified for its Gumi factory in South Korea.

Certificate

Standard: ISO 14001:2015

Certificate Registr. No.: 01 104 6874

Certificate Holder: **CLESTRA HAUSERMAN LIMITED**
 11F, DMC Digital Cube Building, 34 Sangamsan-ro, Mapo-gu, Seoul, 03909, Republic of Korea
 including the locations according to annex

Scope: Manufacturing, Installation and Servicing of Movable Steel Partitions and Steel Ceilings for Offices and Clean Rooms

Proof has been furnished by means of an audit that the requirements of ISO 14001:2015 are met.

Validity: The certificate is valid from 2020-05-29 until 2023-05-28. First certification 2008

2020-05-18


 TÜV Rheinland Cert GmbH
 Am Grauen Stein · 51105 Köln

www.tuv.com





TÜVRheinland®
 Precisely Right.

19001-1201-1:2021 © TÜV Rheinland Zertifizierungssysteme. Die Verwendung dieses Logos durch Dritte ist ohne schriftliche Genehmigung von TÜV Rheinland Zertifizierungssysteme. TÜV Rheinland ist eine eingetragene Marke von TÜV Rheinland Group.

ISO 45001

HEALTH AND SAFETY MANAGEMENT SYSTEM

Clestra is ISO 45001 certified for its Taicang factory in China.



KOSHA 18001

HEALTH AND SAFETY MANAGEMENT SYSTEM

Clestra is KOSHA 18001 certified for its Gumi factory in South Korea.



CRADLE TO CRADLE®

Committed to the future, Clestra has undertaken Cradle to Cradle® certification for its entire range of partitions to guarantee increased quality to its customers and to be as close to the environment as possible.

Cradle to Cradle® is a globally recognized measure of safer, more sustainable products made for the circular economy. It makes it possible to verify that products, from their design to their recycling, create a positive impact on both people and the environment.

The level of certification of a product is assessed according to the following five categories:

Material health: this category ensures that products are made using chemicals that are as safe as possible for humans and the environment.

Material reutilization: this category aims to eliminate the concept of waste by helping to ensure products remain in perpetual cycles of use and reuse from one product use cycle to the next.

Renewable energy and carbon management: this category helps to ensure products are manufactured using renewable energy so that the impact of climate changing greenhouse gases due to the manufacturing of the product is reduced or eliminated.

Water stewardship: this category helps ensure water is recognized as a valuable resource, watersheds are protected, and clean water is available to people and all other organisms.

Social fairness: this category aims to design business operations that honor all people and natural systems affected by the manufacture of a product.



CRADLE TO CRADLE®

Clestra is Cradle to Cradle Certified® Bronze for its solution ranges:

- . synOps
- . synchrOne
- . Metropolines 1
- . pleinAir

» [Click here](#) to see the details of certified products.

The image shows a certification document from Cradle to Cradle. On the left is a blue vertical bar with the text "CRADLE TO CRADLE PRODUCTS INNOVATION INSTITUTE". The main document is on a light green background with a pattern of icons. It features the "Cradle to Cradle Certified™ Bronze" logo at the top. Below the logo, it states "THE LICENSED MARKS IDENTIFIED ABOVE MAY BE LICENSED TO: CLESTRA HAUSERMAN". The certified products are listed as "CLESTRA HAUSERMAN 83mm Partition - Synops, Synchrone, Metropoline 1, pleinAir". The document is signed by Peter Jempton, CEO of Cradle to Cradle Products Innovation Institute. It includes the start date (28 June 2021) and expiration date (27 June 2023). The lead assessment body is Upcyclea Circular Engineering, and the material health assessment body is ARCHE Consulting. At the bottom, it mentions the document is certified under Version 3.1 of the Cradle to Cradle Certified™ Product Standard.

CRADLE TO CRADLE
PRODUCTS
INNOVATION
INSTITUTE

LICENSED MARKS:

Cradle to Cradle Certified™ Bronze

THE LICENSED MARKS IDENTIFIED ABOVE MAY BE LICENSED TO:
CLESTRA HAUSERMAN

FOR THE BELOW LISTED CERTIFIED PRODUCTS ASSOCIATED WITH THE NAME:
**CLESTRA HAUSERMAN 83mm Partition -
Synops, Synchrone, Metropoline 1, pleinAir**

Only the following products are considered Certified Product(s)
within the scope of this certification and the associated
Trademark License Agreement:
Partition 83mm Synops, Synchrone, pleinAir and Metropoline M1

Peter Jempton
Cradle to Cradle Products Innovation Institute

START DATE: 28 June 2021
CERTIFICATION #: 4916
EXPIRATION DATE: 27 June 2023

LEAD ASSESSMENT BODY:
Upcyclea Circular Engineering

MATERIAL HEALTH ASSESSMENT BODY:
ARCHE Consulting

Certified under Version 3.1 of the Cradle to Cradle Certified™ Product Standard
Use of Licensed Marks is subject to terms and conditions of the C2CPII Trademark License Agreement and Trademark Use Guidelines.
Cradle to Cradle Certified™ is a registered trademark of the Cradle to Cradle Products Innovation Institute

CRADLE TO CRADLE®

Clestra is Cradle to Cradle Certified® Bronze for its Metropolines 2 solution range.

» Click [here](#) to see the details of certified products.



EPD

ENVIRONMENTAL PRODUCT DECLARATION

- . What is the environmental impact of our products?
- . What resources, especially raw materials and energy, are consumed?
- . What waste and emissions are generated?

The issues are wider than the products manufacturing context and require a complete study, known as a « Life cycle analysis ».

According to standard NF EN 15804+A1:2014-04, this is the « compilation and evaluation of the inputs, outputs and potential environmental impacts of a product system during its life cycle ». The scope of the LCA (Life Cycle Assessment) may vary depending on the number of stages in the product life cycle. The analysis may consist only of the production stage or of the production stage associated with selected stages of the life cycle. The scope of the LCA reaches its widest level when the full lifecycle is taken into account. This completeness consists of the production stage, installation in the building, use and maintenance, replacements, demolition, treating waste for reuse, recovery, recycling or disposal, meaning « from cradle to grave ». This standard is derived from the international standard ISO 14025.

An environmental product declaration or an environmental and health declaration form is an independently verified and registered document

communicating transparent and comparable information on the environmental impact of the product life cycle. As a voluntary declaration of the life cycle environmental impact, the fact that a product is associated with an EPD (Environmental Product Declaration) does not imply that the declared product is superior to other products from an environmental point of view.

The main purpose of the environmental declaration system is to enable and support organisations to communicate quantified environmental information about their product life cycles in a credible, comparable and comprehensible manner.

For each of these stages, the environmental input and output parameters are also analyzed:

- . Energy
- . Raw materials
- . Water
- . Emissions and waste discharges
- . Waste

The study creates a summary sheet which quantifies the impact indicators based on the flows emitted into and received from the natural environment in terms of:

- . consumption of resources
- . air, water and floor emissions
- . waste production

At present, Clestra has at its disposal two collective EPD for the Metropolines 1 glass partition range. and two individual EPD for all solid panel ranges.

COLLECTIVE EPD

Collective environmental product declaration form (EPD) for removable partition with aluminium frame with frameless glass (total thickness from 18 to 24 mm).

» Click [here](#) to download the full document.



Attestation de conformité au cadre de validité

- FDES collective de cloison démontable en profilés aluminium à remplissage vitré (épaisseur totale de 18 à 24 mm) et bord-à-bord -

La section cloison du SNFA publie cinq Fiches de Déclaration Environnementale et Sanitaire collectives et vérifiées par tierce partie indépendante. Les FDES de cloisons démontables suivantes sont disponibles sur la [base INIES](#) :

Nom de la FDES	Identifiant INIES
Cloison démontable en profilés aluminium à remplissage opaque	7-1804:2018
Cloison démontable en profilés aluminium à remplissage vitré (épaisseur totale de 12 à 16 mm)	7-1805:2018
Cloison démontable en profilés aluminium à remplissage vitré (épaisseur totale de 18 à 24 mm)	7-1806:2018
Cloison démontable en profilés aluminium à remplissage bloc-porte opaque	7-1807:2018
Cloison démontable en profilés aluminium à remplissage bloc-porte vitré	7-1808:2018

Je soussigné Olivier MEYER, en qualité de Directeur Produit de la société Clestra HAUSERMAN, atteste que les produits listés ci-dessous sont conformes au cadre de validité de la FDES « Cloison démontable en profilés aluminium à remplissage vitré (épaisseur totale de 18 à 24 mm) » :

- Notre société est membre du SNFA ou utilise des systèmes conçus par un membre de la section cloison du SNFA,
- Les produits sont conformes au produit type décrit dans la FDES et bénéficient de l'attestation CERFF n° 7,
- Les paramètres sensibles (masses d'aluminium, acier, vitrages, joints, isolants, remplissages...) respectent le tableau des plages de variation de la FDES,
- Les produits ne contiennent pas plus de 0,1% en masse d'une substance classée extrêmement préoccupante (SVHC) selon la liste candidate fournie par l'annexe XIV du règlement REACH.

COLLECTIVE EPD

Collective environmental product declaration form (EPD) for removable partition with aluminium frame, upright and glass (total thickness from 12 to 16 mm).

» Click [here](#) to download the full document.



Attestation de conformité au cadre de validité

- FDES collective de cloison démontable en profilés aluminium à remplissage vitré (épaisseur totale de 12 à 16 mm) -

La section cloison du SNFA publie cinq Fiches de Déclaration Environnementale et Sanitaire collectives et vérifiées par tierce partie indépendante. Les FDES de cloisons démontables suivantes sont disponibles sur la [base INIES](#) :

Nom de la FDES	Identifiant INIES
Cloison démontable en profilés aluminium à remplissage opaque	7-1804:2018
Cloison démontable en profilés aluminium à remplissage vitré (épaisseur totale de 12 à 16 mm)	7-1805:2018
Cloison démontable en profilés aluminium à remplissage vitré (épaisseur totale de 18 à 24 mm)	7-1806:2018
Cloison démontable en profilés aluminium à remplissage bloc-porte opaque	7-1807:2018
Cloison démontable en profilés aluminium à remplissage bloc-porte vitré	7-1808:2018

Je soussigné Olivier MEYER, en qualité de Directeur Produit de la société Clestra HAUSERMAN, atteste que les produits listés ci-dessous sont conformes au cadre de validité de la FDES « Cloison démontable en profilés aluminium à remplissage vitré (épaisseur totale de 12 à 16 mm) » :

- Notre société est membre du SNFA ou utilise des systèmes conçus par un membre de la section cloison du SNFA,
- Les produits sont conformes au produit type décrit dans la FDES et bénéficient de l'attestation CERFF n° 1234567890,
- Les paramètres sensibles (masses d'aluminium, acier, vitrages, joints, isolants, remplissages...) respectent le tableau des plages de variation de la FDES,
- Les produits ne contiennent pas plus de 0,1% en masse d'une substance classée extrêmement préoccupante (SVHC) selon la liste candidate fournie par l'annexe XIV du règlement REACH.

INDIVIDUAL EPD

Individual environmental product declaration form (EPD) for the range of steel monoblock removable partition.

» Click [here](#) to download the full document.

Fiche de Déclaration Environnementale et Sanitaire



FDES - Fiche de Déclaration Environnementale et Sanitaire

Gamme de cloison amovible monobloc à parement en acier

Etude réalisée par EcoAct, numéro d'inscription INIES : 4-523:2021

Date de publication : mai 2021

Date de validité : mai 2026



INDIVIDUAL EPD

Individual environmental product declaration form (EPD) for the range of monoblock removable partition with reinforced steel.

» Click [here](#) to download the full document.

Fiche de Déclaration Environnementale et Sanitaire



FDES - Fiche de Déclaration Environnementale et Sanitaire

Gamme de cloison amovible monobloc à parement en acier renforcé

Etude réalisée par EcoAct, numéro d'inscription INIES : 4-524:2021

Date de publication : mai 2021

Date de validité : mai 2026



VOC EMISSIONS

VOLATILE ORGANIC COMPOUNDS EMISSIONS

In order to transparently inform the user about the level of volatile pollutant emissions from a construction or decorative product, the manufacturer has the obligation to affix information on this subject on the label.

Clestra partitions are rated A+, the best classification for emissions into indoor air.

Clestra carried out the VOC emissions tests according to the CDPH-IAQ protocol, version 1.2 dated January 2017, which confirms the compliance of our products.

» [Click here](#) to download the full document.



Attestation

On 1 December 2014, Eurofins Product Testing A/S received a sample of a sandwich panel with the product name :

83-85-91-92-93-94

supplied by

Clestra Hauserman

The product was tested for VOC emissions according to the requirements of the French legislation (order of April 2011) concerning the labeling of construction products or coverings of walls or floors and paint and varnishes on their emissions of volatiles pollutants. Sampling, testing and evaluation were performed according to ISO 16000 in its latest versions, see test report no. 392-2014-00289801Arev1.

In accordance with legislative requirements, the test results can be summarized as follows:

ÉMISSIONS DANS L'AIR INTÉRIEUR*



A+

A+	A	B	C
----	---	---	---

*Information sur le niveau d'émission de substances volatiles dans l'air intérieur, présentant un risque de toxicité par inhalation, sur une échelle de classe allant de A+ (très faibles émissions) à C (fortes émissions).

The product was assigned a VOC emission class without taking into account the measurement uncertainty associated with the result. As specified in French Decree no. 2011-321 of March 23, 2011, correct assignment of the VOC emission class is the sole responsibility of the party responsible for distribution of the product in the French market.

11 February 2015



Maria Pelle
Chemist



Janne R. Norup
Chemist

Eurofins Product Testing A/S • Smedeskovvej 38, 8464 Galten, Denmark • Tel. +45 70 22 42 76
www.product-testing.eurofins.com



WWW.CLESTRA.COM

CLESTRA